

PEDIATRIC TRAUMA AND BURN CASE DISCUSSION

MNACEP 2025

PANELISTS

Moderator: Tracey Larsen, BSN TCRN

Captain: Chief Sampson

Emergency Medicine Physician: Dr. Peter Kumasaka

Orthopedic Surgeon: Dr. Sarah Anderson

Burn Physician: Dr. Alex Lacey

Med/Peds Hospitalist: Dr. Brian Flagstad

Burn and Trauma Psychotherapist: Mikki Rothbauer, MSW LICSW

PRE-HOSPITAL



EMERGENCY DEPARTMENT



ORTHOPEDIC CARE



Se
L
SUPINE

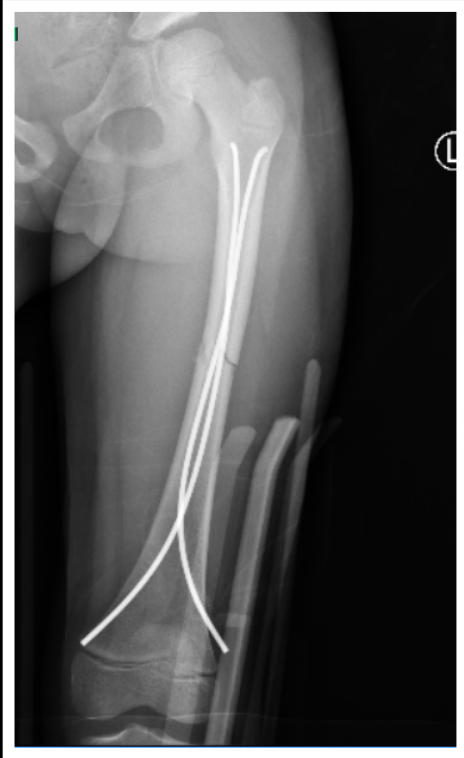
WW: 3,



Series 71
60 kV
L
303
WW: 3,681 W



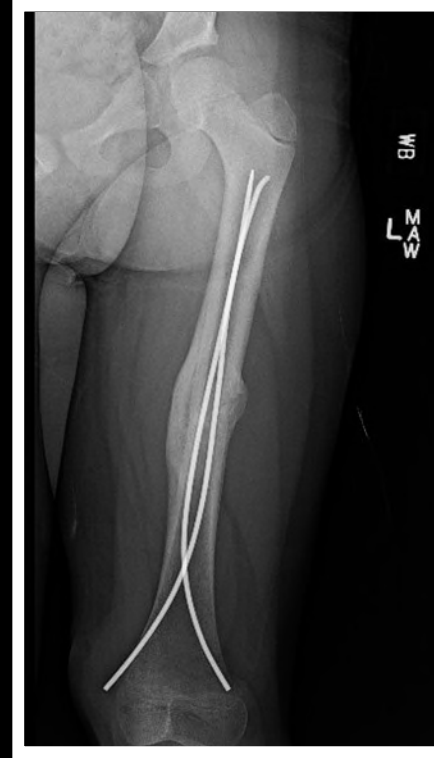
POST-OP AND HEALING



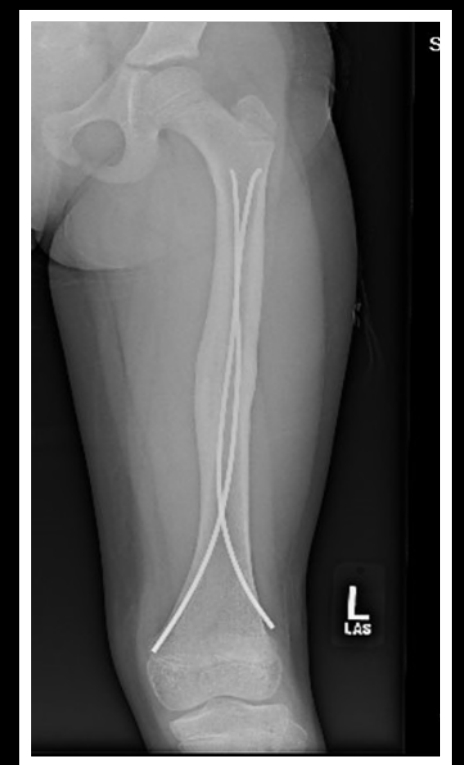
1 WEEK



1 MONTH
Toe touch WB til 6 weeks

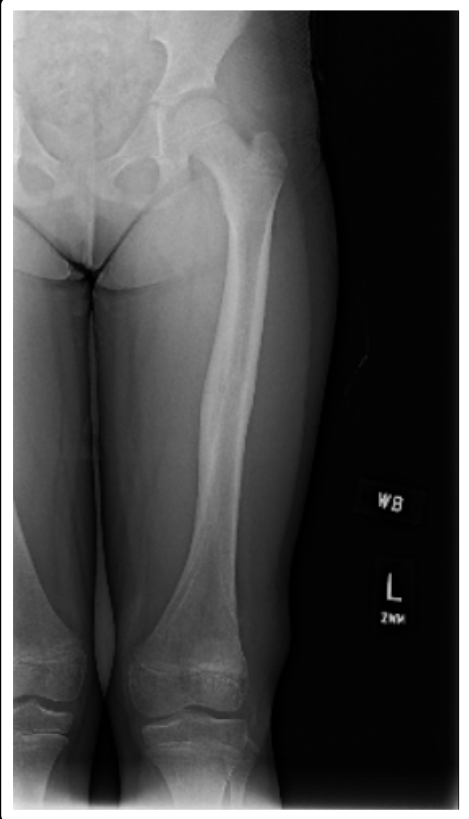


3 MONTHS



6 MONTHS

9 MONTHS- HARDWARE REMOVAL



BURN UNIT

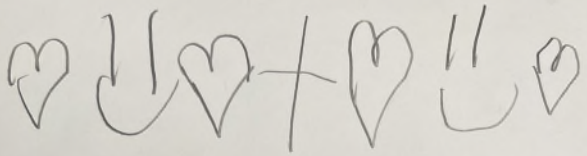


BURN UNIT



REHAB AND RECOVERY + BURN CAMP





~~Rich~~
Thank you for
savin^g

my life!!!
!!!!!!

I'm^o outright.

Love Isabella

